

# 1T162W6S - Pressure Intensifier

## Hydraulic Integrated Circuits

### Description

This valve is used to convert low input pressure from a small low pressure pump or sub-circuit to high pressure up to 700 bar (10000 psi) and can eliminate the need for high pressure pump, or high-low type circuit. It is best suited for use with low horsepower, variable volume pumps. Contact main office for full specifications.

### Operation

The pressure intensifier allows free flow of oil through the inlet to the actuator until high pressure is required, then reciprocates to intensify the pressure with a ratio of 6.5-1 between the inlet pressure and the intensified pressure up to a maximum 700 bar. The unit automatically makes up for any leakage to prevent loss of pressure during clamping or cutting operations. The flow to the 'P' port should be regulated to prevent a too rapid cycle rate.

### Features

Eliminates the need for single stroke air/oil systems. Continuous automatic make up for leakage. Light weight and compact. Reliable high quality.

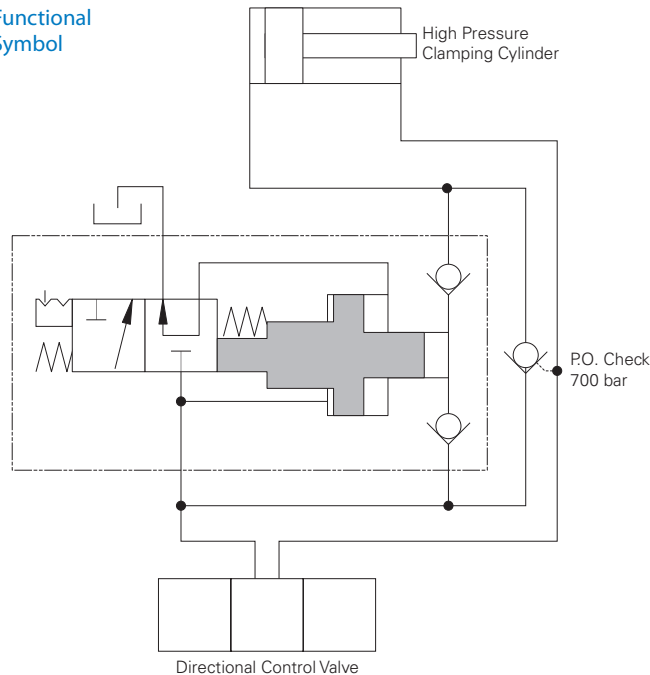
### Max Pressure:

Inlet 110 bar (1600 psi)  
Output 700 bar (10,000 psi)

### Rated Flow:

Inlet 1.5 L/min (0.4 USgpm)  
Output 165 mL/min (10 in<sup>3</sup>/min)

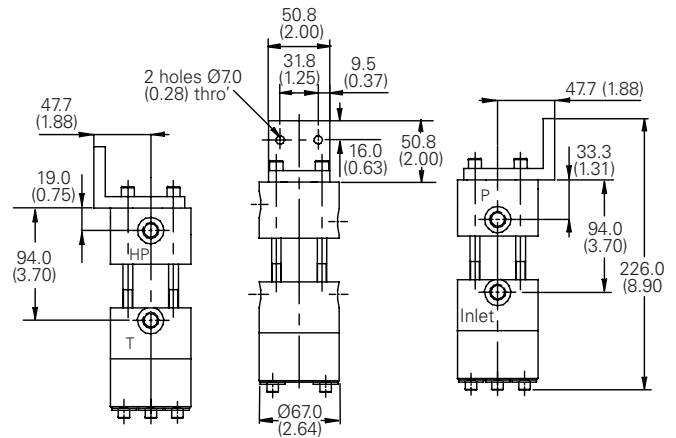
### Functional Symbol



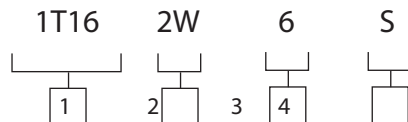
### Dimensions

mm (inch)

### Installation Drawing



### Model Code



**1** Basic code  
1T16 - Intensifier

**2** Port sizes  
2W - 1/4" BSP

**3** Pressure Intensification Ratio  
6 - 6.5:1

**4** Seals  
S - Nitrile (for use with most industrial hydraulic oils)  
SV - Viton (for high temperature & most special fluid applications)